

# Ombres d'Esteren

## CHARACTER SHEET

Name: **Markdan Stone**

Player: **Sylvain**

Sex: **H** Age: **21** Ethnicity: **Continent**

Profession: **Garde de Reizh**

Description: **Garde d'élite de Reizh**

### Ways

Combativeness: **5**

Empathy: **3**

Creativity: **2**

Reason: **4**

Conviction: **1**

### Advantages

Bonne vue **x2**

Nimble

### Disadvantages

Addiction

Enemy

Obtuse

### Health Condition

Good 00000

Okay -1 00000

Bad -2 0000

Critical -3 0000

Agony 0



Stamina: **8**

Survival: **3**

## Domains & Disciplines

### Craft

OOOOO+(CREA:2)

Bonus: Malus:

Disc:

Disc:

Disc:

### Close Combat

●OOOO+(COMB:5)

Bonus: Malus:

Disc:

Disc:

Disc:

### Stealth

●●●●●+(EMP:3)

Bonus: +1 Malus:

Disc:

Disc:

Disc:

### Erudition

OOOOO+(REA:4)

Bonus: Malus:

Disc:

Disc:

Disc:

### Magience

●●●●O+(REA:4)

Bonus: Malus:

Disc:

Disc:

Disc:

### Natural env.

●●●●O+(EMP:3)

Bonus: Malus:

Disc:

Disc:

Disc:

### Demorthèn Mys.

OOOOO+(EMP:3)

Bonus: Malus: ~1

Disc:

Disc:

Disc:

### Occultism

OOOOO+(REA:4)

Bonus: Malus:

Disc:

Disc:

Disc:

### Perception

●●●●●+(REA:4)

Bonus: +2 Malus:

Disc: Acute Senses 6

Disc:

Disc:

### Prayer

OOOOO+(CONV:1)

Bonus: Malus:

Disc:

Disc:

Disc:

### Feats

●●●●O+(COMB:5)

Bonus: +1 Malus:

Disc:

Disc:

Disc:

### Relation

OOOOO+(EMP:3)

Bonus: Malus: ~1

Disc:

Disc:

Disc:

### Performance

OOOOO+(CREA:2)

Bonus: Malus:

Disc:

Disc:

Disc:

### Science

OOOOO+(REA:4)

Bonus: Malus:

Disc:

Disc:

Disc:

### Shooting & throw.

●●●●●+(COMB:5)

Bonus: +2 Malus:

Disc: Artifact Fighting 6

Disc:

Disc:

### Travel

OOOOO+(EMP:3)

Bonus: Malus: ~1

Disc:

Disc:

Disc:



# Weapons

Dagger, knife, dirk      dmg: 1  
 \_\_\_\_\_      dmg:  
 \_\_\_\_\_      dmg:  
 \_\_\_\_\_      dmg:  
 \_\_\_\_\_      dmg:

Potential: 2

# Combat attitudes

CàC/Tir

- ⊕ Standard  
Atk: 6/12 Def: 13 Spd: 8
- ⊕ Offensive  
Atk: 8/14 Def: 11 Spd: 8
- ⊕ Defensive  
Atk: 4/10 Def: 15 Spd: 8
- ⊕ Quick  
Atk: 6/12 Def: 11 Spd: 10
- ⊕ Movement  
Atk: 0/0 Def: 15 Spd: 8

# Defense :

00000 00000

# Speed:

00000

# Armor:

Studded leather tunic (2)



# ⊕ Equipment

\_\_\_\_\_  
 \_\_\_\_\_  
 \_\_\_\_\_  
 \_\_\_\_\_  
 \_\_\_\_\_  
 \_\_\_\_\_  
 \_\_\_\_\_  
 \_\_\_\_\_

# ⊕ Treasure

0      ⊕ Ember

0      ⊕ Azure

0      ⊕ Frost

# Valuables

\_\_\_\_\_  
 \_\_\_\_\_  
 \_\_\_\_\_

# ⊕ Artifacts

\_\_\_\_\_  
 \_\_\_\_\_  
 \_\_\_\_\_

# ⊕ Combat arts

\_\_\_\_\_  
 \_\_\_\_\_  
 \_\_\_\_\_

# ⊕ Resources

00000 00000 00000  
 00000 00000 00000  
 00000 00000 00000

# Rindath



Score: 10 / 10

# Ogham:

⊕ \_\_\_\_\_  
 ⊕ \_\_\_\_\_  
 ⊕ \_\_\_\_\_  
 ⊕ \_\_\_\_\_  
 ⊕ \_\_\_\_\_  
 ⊕ \_\_\_\_\_

# Exaltation



Score: 3 / 3

# ⊕ Major miracles:

\_\_\_\_\_  
 \_\_\_\_\_  
 \_\_\_\_\_

# ⊕ Minor miracles:

\_\_\_\_\_  
 \_\_\_\_\_  
 \_\_\_\_\_

# Flux



## Mineral Flux

00000 00000 00000

## Vegetal Flux

00000 00000 00000

## Organic Flux

00000 00000 00000

## Fossil Flux

00000 00000 00000





# History

Birthplace: Reizh - Region of Baldh-Ruoch - Rural

Social class: Peasant

Setbacks: Wound

# Mental health

Mental Resistance: 6

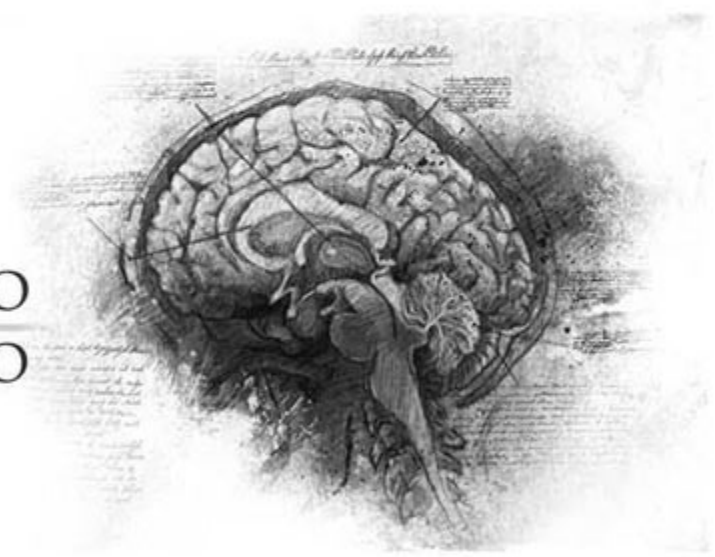
	Balance	Symptom	Syndrom	Madness
TRAUMA :	●●○○○	○○○○○	○○○○○	○○○○○
Hardening:	○○○○○	○○○○○	○○○○○	○○○○○

Disorder: Paranoïa

Str./Weak:

Scarring :

Special Ability:



# Personnality

Conscience : 5

Instinct : 7

Orientation : Instinctive

Character traits : Quality : Disciplined

Flaw : Immoral

# Faults

Passion : 5

Subversion : 2

Influence : 3

Doubt : 4

Guilt : 1

# Experience Points

Reste : 0

Total : 100

Highlights :

