

Ombres d'Esteren

CHARACTER SHEET

Name: Fitz Player: Tom
 Sex: H Age: 24 Ethnicity: Continent Profession: Hunter
 Description: Maigre, cheveux long et brun.

Ways

Combativeness: 5
 Empathy: 3
 Creativity: 3
 Reason: 2
 Conviction: 2

Advantages

Disadvantages

Health Condition

Good	00000
Okay	-1 00000
Bad	-2 00000
Critical	-3 00000
Agony	0



Stamina: 9
 Survival: 3

Domains & Disciplines

Craft

●●○○○+(CREA: 3)
 Bonus: Malus:
 Disc:
 Disc:
 Disc:

Close Combat

●●●○○+(COMB: 5)
 Bonus: Malus:
 Disc:
 Disc:
 Disc:

Stealth

●○○○○+(EMP: 3)
 Bonus: Malus:
 Disc:
 Disc:
 Disc:

Erudition

○○○○○+(REA: 2)
 Bonus: Malus:
 Disc:
 Disc:
 Disc:

Magience

○○○○○+(REA: 2)
 Bonus: Malus:
 Disc:
 Disc:
 Disc:

Natural env.

●●●●●+(EMP: 3)
 Bonus: Malus:
 Disc: Animal Training 6
 Disc: Tracking 6
 Disc:

Demorthèn Mys.

○○○○○+(EMP: 3)
 Bonus: Malus:
 Disc:
 Disc:
 Disc:

Occultism

○○○○○+(REA: 2)
 Bonus: Malus:
 Disc:
 Disc:
 Disc:

Perception

●●○○○+(REA: 2)
 Bonus: Malus:
 Disc:
 Disc:
 Disc:

Prayer

○○○○○+(CONV: 2)
 Bonus: Malus:
 Disc:
 Disc:
 Disc:

Feats

●○○○○+(COMB: 5)
 Bonus: Malus:
 Disc:
 Disc:
 Disc:

Relation

○○○○○+(EMP: 3)
 Bonus: Malus:
 Disc:
 Disc:
 Disc:

Performance

○○○○○+(CREA: 3)
 Bonus: Malus:
 Disc:
 Disc:
 Disc:

Science

●○○○○+(REA: 2)
 Bonus: Malus:
 Disc:
 Disc:
 Disc:

Shooting & throw.

●●●○○+(COMB: 5)
 Bonus: Malus:
 Disc:
 Disc:
 Disc:

Travel

●○○○○+(EMP: 3)
 Bonus: Malus:
 Disc:
 Disc:
 Disc:



Weapons

Bow _____ dmg: 2
 _____ dmg:
 _____ dmg:
 _____ dmg:
 _____ dmg:

Potential: 2

Combat attitudes

Cà/Tir

- ⊕ Standard
Atk: 8/8 Def: 10 Spd: 8
- ⊕ Offensive
Atk: 10/10 Def: 8 Spd: 8
- ⊕ Defensive
Atk: 6/6 Def: 12 Spd: 8
- ⊕ Quick
Atk: 8/8 Def: 8 Spd: 10
- ⊕ Movement
Atk: 0/0 Def: 12 Spd: 8

Defense :

00000 00000

Speed:

00000

Armor:

Leather tunic (1)



⊕ Equipment

⊕ Treasure

- 0  Ember
- 0  Azure
- 0  Frost

Valuables

⊕ Artifacts

⊕ Combat arts

⊕ Resources

00000 00000 00000
 00000 00000 00000
 00000 00000 00000

Rindath

Score: 11 / 11



Ogham:

-  _____
-  _____
-  _____
-  _____
-  _____
-  _____

Exaltation

Score: 6 / 6



⊕ Major miracles:

⊕ Minor miracles:

Flux



Mineral Flux

00000 00000 00000

Vegetal Flux

00000 00000 00000

Organic Flux

00000 00000 00000

Fossil Flux

00000 00000 00000



History

Birthplace: Taol-Kaer - Dukedom of Osta-Baille - Rural

Social class: Craftsman

Setbacks: Wound

Unique fils et désormais orphelin, Fitz à appris l'hebenisterie par son père. A sa mort, et n'ayant pas su garder l'atelier paternel, il partit subvenir à ses besoins dans la nature. C'est ainsi qu'il devins chasseur.

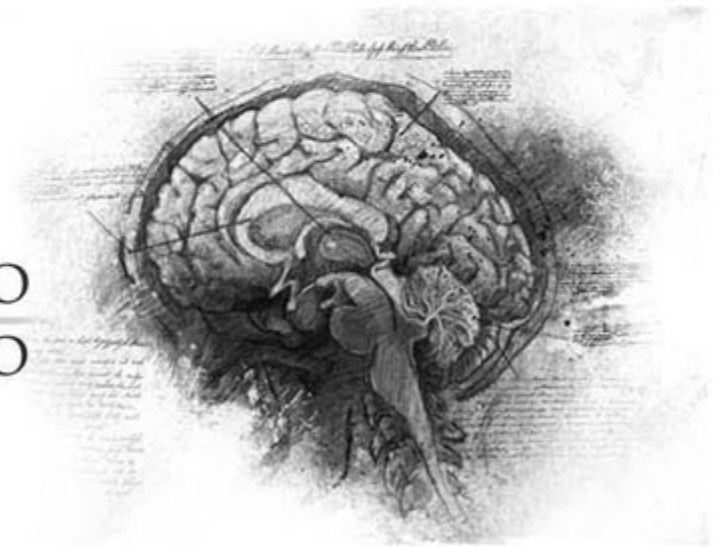
Mental health

Mental Resistance: 7

	Balance	Symptom	Syndrom	Madness
TRAUMA :	●●●●○	○○○○○	○○○○○	○○○○○
Hardening:	○○○○○	○○○○○	○○○○○	○○○○○

Disorder: **Confusion mentale** Str./Weak:

Scarring : Special Ability:



Personnality

Conscience : 4 Instinct : 8 Orientation : *Instinctive*

Character traits : **Quality : Combative**

Flaw : Daring

Faults

Passion : 5

Subversion : 3

Influence : 3

Doubt : 2

Guilt : 2



Experience Points

Reste : 50

Total : 100

Highlights : **Orphelin et troublé par des visions de flammes vertes.**