

# Ombres d'Esteren

## CHARACTER SHEET

Name: zergf Player: sdf  
 Sex: H Age: 21 Ethnicity: Tri-Kazel Profession: Physician  
 Description: qsd

### Ways

Combativeness: 2  
 Empathy: 3  
 Creativity: 4  
 Reason: 5  
 Conviction: 1

### Advantages

Smart  
 Keen Smell

### Disadvantages

Weak Mind  
 Slow

### Health Condition

Good	00000
Okay	-1 00000
Bad	-2 0000
Critical	-3 0000
Agony	0



Stamina: 10  
 Survival: 3

## Domains & Disciplines

### Craft

OOOOO+(CREA: 4)  
 Bonus: Malus:  
 Disc:  
 Disc:  
 Disc:

### Close Combat

●OOOO+(COMB: 2)  
 Bonus: Malus:  
 Disc:  
 Disc:  
 Disc:

### Stealth

●OOOO+(EMP: 3)  
 Bonus: Malus:  
 Disc:  
 Disc:  
 Disc:

### Erudition

●●●●●+(REA: 5)  
 Bonus: Malus:  
 Disc:  
 Disc:  
 Disc:

### Magience

OOOOO+(REA: 5)  
 Bonus: +1 Malus:  
 Disc:  
 Disc:  
 Disc:

### Natural env.

●●●●●+(EMP: 3)  
 Bonus: Malus:  
 Disc:  
 Disc:  
 Disc:

### Demorthen Mys.

OOOOO+(EMP: 3)  
 Bonus: Malus:  
 Disc:  
 Disc:  
 Disc:

### Occultism

OOOOO+(REA: 5)  
 Bonus: +1 Malus:  
 Disc:  
 Disc:  
 Disc:

### Perception

●OOOO+(REA: 5)  
 Bonus: +1 Malus:  
 Disc:  
 Disc:  
 Disc:

### Prayer

OOOOO+(CONV: 1)  
 Bonus: Malus:  
 Disc:  
 Disc:  
 Disc:

### Feats

●●OOO+(COMB: 2)  
 Bonus: Malus:  
 Disc:  
 Disc:  
 Disc:

### Relation

●●●OO+(EMP: 3)  
 Bonus: Malus:  
 Disc:  
 Disc:  
 Disc:

### Performance

OOOOO+(CREA: 4)  
 Bonus: Malus:  
 Disc:  
 Disc:  
 Disc:

### Science

●●●●●+(REA: 5)  
 Bonus: +1 Malus:  
 Disc:  
 Disc:  
 Disc:

### Shooting & throw.

●●OOO+(COMB: 2)  
 Bonus: Malus:  
 Disc:  
 Disc:  
 Disc:

### Travel

OOOOO+(EMP: 3)  
 Bonus: Malus:  
 Disc:  
 Disc:  
 Disc:



# Weapons

\_\_\_\_\_ dmg:  
 \_\_\_\_\_ dmg:  
 \_\_\_\_\_ dmg:  
 \_\_\_\_\_ dmg:  
 \_\_\_\_\_ dmg:

Potential: 2

# Combat attitudes

CàC/Tir

- ⊕ Standard  
Atk: 3/4 Def: 13 Spd: 4
- ⊕ Offensive  
Atk: 5/6 Def: 11 Spd: 4
- ⊕ Defensive  
Atk: 1/2 Def: 15 Spd: 4
- ⊕ Quick  
Atk: 3/4 Def: 11 Spd: 6
- ⊕ Movement  
Atk: 0/0 Def: 15 Spd: 4

# Defense :

00000 00000

# Speed:

00000

# Armor:



# ⊕ Equipment

\_\_\_\_\_  
 \_\_\_\_\_  
 \_\_\_\_\_  
 \_\_\_\_\_  
 \_\_\_\_\_  
 \_\_\_\_\_  
 \_\_\_\_\_  
 \_\_\_\_\_

# ⊕ Treasure

- 0  Ember
- 0  Azure
- 0  Frost

# Valuables

# ⊕ Artifacts

\_\_\_\_\_  
 \_\_\_\_\_  
 \_\_\_\_\_

# ⊕ Combat arts

\_\_\_\_\_  
 \_\_\_\_\_  
 \_\_\_\_\_

# ⊕ Resources

00000 00000 00000  
 00000 00000 00000  
 00000 00000 00000

# Rindath

Score: 9 / 9



# Ogham:

 \_\_\_\_\_  
 \_\_\_\_\_  
 \_\_\_\_\_  
 \_\_\_\_\_  
 \_\_\_\_\_  
 \_\_\_\_\_

# Exaltation

Score: 3 / 3



# ⊕ Major miracles:

\_\_\_\_\_  
 \_\_\_\_\_  
 \_\_\_\_\_

# ⊕ Minor miracles:

\_\_\_\_\_  
 \_\_\_\_\_  
 \_\_\_\_\_

# Flux



Mineral Flux  
 00000 00000 00000

Vegetal Flux  
 00000 00000 00000

Organic Flux  
 00000 00000 00000

Fossil Flux  
 00000 00000 00000





# History

Birthplace: Taol-Kaer - Dukedom of Kel Loar - Rural  
 Social class: Peasant  
 Setbacks: Solitude

sqdf

---

---

---

---

---

---

---

---

# Mental health

Mental Resistance: 5

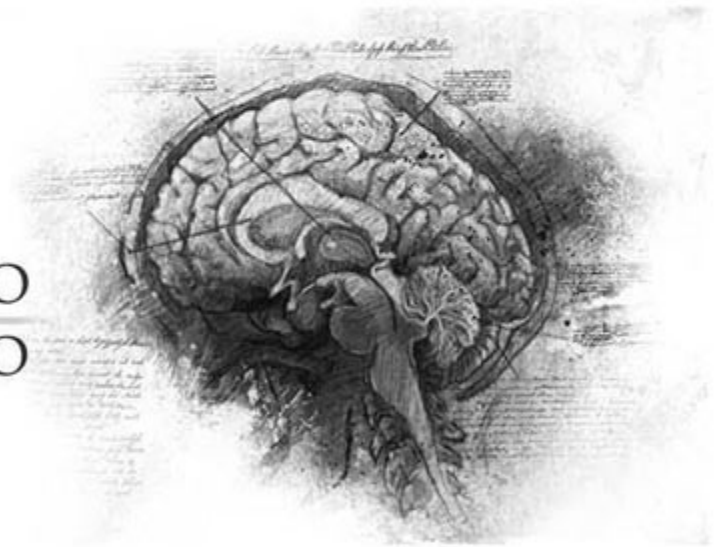
	Balance	Symptom	Syndrom	Madness
TRAUMA :	OOOOOO	OOOOOO	OOOOOO	OOOOOO
Hardening:	OOOOOO	OOOOOO	OOOOOO	OOOOOO

Disorder: *Mélancolie*

Str./Weak:

Scarring :

Special Ability:



# Personnality

Conscience : 6

Instinct : 6

Orientation : *Rationnelle*

Character traits : *Quality : Ingenious*

*Flaw : Absent-minded*

---

---

---

---

---

---

---

---

# Faults

Passion : 2

Subversion : 4

Influence : 3

Doubt : 5

Guilt : 1



# Experience Points

Reste : 20

Total : 100

Highlights : sqdf

---

---

---

---

---

---

---

---