

# Ombres d'Esteren

## CHARACTER SHEET

Name: Ostova Swiftmoon Player: Harry  
 Sex: F Age: 26 Ethnicity: Tri-Kazel Profession: Merchant  
 Description: Femme commerçante itinérante et peintre a ses heures perdus

### Ways

Combativeness: 2  
 Empathy: 5  
 Creativity: 4  
 Reason: 3  
 Conviction: 1

### Advantages

### Disadvantages

### Health Condition

Good	00000
Okay	-1 00000
Bad	-2 00000
Critical	-3 00000
Agony	0



Stamina: 10  
 Survival: 3

## Domains & Disciplines

### Craft

●●●●●+(CREA: 4)  
 Bonus: Malus:  
 Disc: Painting 6  
 Disc:  
 Disc:

### Close Combat

●○○○○+(COMB: 2)  
 Bonus: Malus:  
 Disc:  
 Disc:  
 Disc:

### Stealth

●●○○○+(EMP: 5)  
 Bonus: Malus:  
 Disc:  
 Disc:  
 Disc:

### Erudition

●●●○○+(REA: 3)  
 Bonus: Malus:  
 Disc:  
 Disc:  
 Disc:

### Magience

○○○○○+(REA: 3)  
 Bonus: Malus:  
 Disc:  
 Disc:  
 Disc:

### Natural env.

●●○○○+(EMP: 5)  
 Bonus: Malus:  
 Disc:  
 Disc:  
 Disc:

### Demorthèn Mys.

○○○○○+(EMP: 5)  
 Bonus: Malus:  
 Disc:  
 Disc:  
 Disc:

### Occultism

○○○○○+(REA: 3)  
 Bonus: Malus:  
 Disc:  
 Disc:  
 Disc:

### Perception

●●●○○+(REA: 3)  
 Bonus: Malus:  
 Disc:  
 Disc:  
 Disc:

### Prayer

○○○○○+(CONV: 1)  
 Bonus: Malus:  
 Disc:  
 Disc:  
 Disc:

### Feats

●●○○○+(COMB: 2)  
 Bonus: Malus:  
 Disc:  
 Disc:  
 Disc:

### Relation

●●●●●+(EMP: 5)  
 Bonus: Malus:  
 Disc: Etiquette of a particular social class:  
 Disc:  
 Disc:

### Performance

●●●○○+(CREA: 4)  
 Bonus: Malus:  
 Disc:  
 Disc:  
 Disc:

### Science

○○○○○+(REA: 3)  
 Bonus: Malus:  
 Disc:  
 Disc:  
 Disc:

### Shooting & throw.

○○○○○+(COMB: 2)  
 Bonus: Malus:  
 Disc:  
 Disc:  
 Disc:

### Travel

●●○○○+(EMP: 5)  
 Bonus: Malus:  
 Disc:  
 Disc:  
 Disc:



# Weapons

Dagger, knife, dirk      dmg: 1  
 Staff                      dmg: 2  
 \_\_\_\_\_                dmg:  
 \_\_\_\_\_                dmg:  
 \_\_\_\_\_                dmg:

Potential: 2

# Combat attitudes

CàC/Tir

- ⊕ Standard  
Atk: 3/2 Def: 13 Spd: 7
- ⊕ Offensive  
Atk: 5/4 Def: 11 Spd: 7
- ⊕ Defensive  
Atk: 1/0 Def: 15 Spd: 7
- ⊕ Quick  
Atk: 3/2 Def: 11 Spd: 9
- ⊕ Movement  
Atk: 0/0 Def: 15 Spd: 7

# Defense :

00000 00000

# Speed:

00000

# Armor:

Leather tunic (1)



# ⊕ Equipment

\_\_\_\_\_  
 \_\_\_\_\_  
 \_\_\_\_\_  
 \_\_\_\_\_  
 \_\_\_\_\_  
 \_\_\_\_\_  
 \_\_\_\_\_  
 \_\_\_\_\_

# ⊕ Treasure

- 0      ⊕ Ember
- 0      ⊕ Azure
- 0      ⊕ Frost

# Valuables

\_\_\_\_\_  
 \_\_\_\_\_

# ⊕ Artifacts

\_\_\_\_\_  
 \_\_\_\_\_

# ⊕ Combat arts

\_\_\_\_\_  
 \_\_\_\_\_

# ⊕ Resources

00000 00000 00000  
 00000 00000 00000  
 00000 00000 00000

# Rindath



Score: 11 / 11

# Ogham:

⊕ \_\_\_\_\_  
 ⊕ \_\_\_\_\_  
 ⊕ \_\_\_\_\_  
 ⊕ \_\_\_\_\_  
 ⊕ \_\_\_\_\_  
 ⊕ \_\_\_\_\_

# Exaltation



Score: 3 / 3

# ⊕ Major miracles:

\_\_\_\_\_  
 \_\_\_\_\_

# ⊕ Minor miracles:

\_\_\_\_\_  
 \_\_\_\_\_

# Flux



## Mineral Flux

00000 00000 00000

## Vegetal Flux

00000 00000 00000

## Organic Flux

00000 00000 00000

## Fossil Flux

00000 00000 00000





# History

Birthplace: Reizh - Tri-Swezörs archipelago - Urbain

Social class: Middle class

Setbacks: Rumor - Solitude

---



---



---



---



---



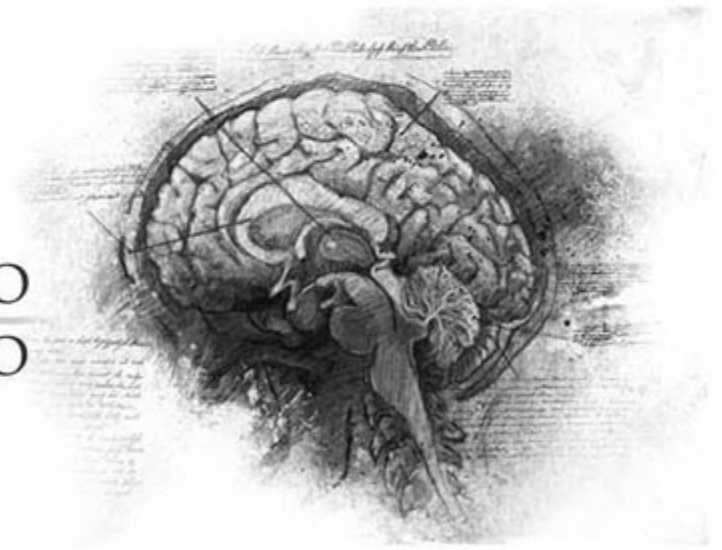
---

# Mental health

Mental Resistance: 6

	Balance	Symptom	Syndrom	Madness
TRAUMA :	●●○○○	○○○○○	○○○○○	○○○○○
Hardening:	○○○○○	○○○○○	○○○○○	○○○○○

Disorder: **Confusion mentale**    Str./Weak:  
 Scarring :                                    Special Ability:



# Personnality

Conscience : 4    Instinct : 6    Orientation : *Instinctive*

Character traits : *Quality : Intuitive*  
*Flaw : Bavarde*

---



---



---



---



---

# Faults

Passion : 2  
 Subversion : 4  
 Influence : 5  
 Doubt : 3  
 Guilt : 1



# Experience Points

Reste : 0    Total : 100

Highlights : ...

---



---



---



---