

# Ombres d'Esteren

## CHARACTER SHEET

Name: Eben Keleb

Player: Coris Dyckman

Sex: H Age: 31 Ethnicity: Tri-Kazel

Profession: Hunter

Description: \_\_\_\_\_

### Ways

Combativeness: 3

Empathy: 2

Creativity: 3

Reason: 2

Conviction: 5

### Advantages

Mentor Ally

Strong x2

### Disadvantages

Addiction

Weak Mind

Phobia

### Health Condition

Good 00000

Okay -1 00000

Bad -2 0000

Critical -3 0000

Agony 0



Stamina: 9

Survival: 3

## Domains & Disciplines

### Craft

OOOOO+(CREA:3)

Bonus: Malus:

Disc:

Disc:

Disc:

### Close Combat

●●●●●+(COMB:3)

Bonus: +2 Malus:

Disc: Swords 6

Disc:

Disc:

### Stealth

●●OOO+(EMP:2)

Bonus: Malus:

Disc:

Disc:

Disc:

### Erudition

OOOOO+(REA:2)

Bonus: Malus:

Disc:

Disc:

Disc:

### Magience

OOOOO+(REA:2)

Bonus: Malus:

Disc:

Disc:

Disc:

### Natural env.

●●●●●+(EMP:2)

Bonus: Malus:

Disc: Tracking 6

Disc:

Disc:

### Demorthen Mys.

OOOOO+(EMP:2)

Bonus: Malus:

Disc:

Disc:

Disc:

### Occultism

OOOOO+(REA:2)

Bonus: Malus:

Disc:

Disc:

Disc:

### Perception

●●OOO+(REA:2)

Bonus: Malus:

Disc:

Disc:

Disc:

### Prayer

OOOOO+(CONV:5)

Bonus: Malus:

Disc:

Disc:

Disc:

### Feats

●●●●O+(COMB:3)

Bonus: +2 Malus:

Disc:

Disc:

Disc:

### Relation

OOOOO+(EMP:2)

Bonus: Malus:

Disc:

Disc:

Disc:

### Performance

OOOOO+(CREA:3)

Bonus: Malus:

Disc:

Disc:

Disc:

### Science

OOOOO+(REA:2)

Bonus: Malus:

Disc:

Disc:

Disc:

### Shooting & throw.

OOOOO+(COMB:3)

Bonus: +2 Malus:

Disc:

Disc:

Disc:

### Travel

●●OOO+(EMP:2)

Bonus: Malus:

Disc:

Disc:

Disc:



# Weapons

Osag straight-bladed longsword 3  
 Long sword                   dmg: 3  
 \_\_\_\_\_                   dmg:  
 \_\_\_\_\_                   dmg:  
 \_\_\_\_\_                   dmg:

Potential: 2

# Combat attitudes

CàC/Tir

- ⊕ Standard  
Atk: 10/5 Def: 9 Spd: 5
- ⊕ Offensive  
Atk: 12/7 Def: 7 Spd: 5
- ⊕ Defensive  
Atk: 8/3 Def: 11 Spd: 5
- ⊕ Quick  
Atk: 10/5 Def: 7 Spd: 7
- ⊕ Movement  
Atk: 0/0 Def: 11 Spd: 5

# Defense :

00000 00000

# Speed:

00000

# Armor:

Osag shield (1)  
 Studded leather tunic (2)



# ⊕ Equipment

\_\_\_\_\_  
 \_\_\_\_\_  
 \_\_\_\_\_  
 \_\_\_\_\_  
 \_\_\_\_\_  
 \_\_\_\_\_  
 \_\_\_\_\_  
 \_\_\_\_\_

# ⊕ Treasure

- 0      ⊕ Ember
- 0      ⊕ Azure
- 0      ⊕ Frost

# Valuables

\_\_\_\_\_  
 \_\_\_\_\_

# ⊕ Artifacts

\_\_\_\_\_  
 \_\_\_\_\_

# ⊕ Combat arts

Sneak Attack  
 Two-weapon Fighting

# ⊕ Resources

00000 00000 00000  
 00000 00000 00000  
 00000 00000 00000

# Rindath

Score: 8 / 8



# Ogham:

⊕ \_\_\_\_\_  
 ⊕ \_\_\_\_\_  
 ⊕ \_\_\_\_\_  
 ⊕ \_\_\_\_\_  
 ⊕ \_\_\_\_\_  
 ⊕ \_\_\_\_\_

# Exaltation

Score: 15 / 15



# ⊕ Major miracles:

# ⊕ Minor miracles:

\_\_\_\_\_  
 \_\_\_\_\_  
 \_\_\_\_\_  
 \_\_\_\_\_

# Flux



Mineral Flux  
 00000 00000 00000  
 Vegetal Flux  
 00000 00000 00000  
 Organic Flux  
 00000 00000 00000  
 Fossil Flux  
 00000 00000 00000





# History

Birthplace: Taol-Kaer - Lands of Deas - Rural

Social class: Peasant

Setbacks: Tragic Love - Violence - Solitude

# Mental health

Mental Resistance: 9

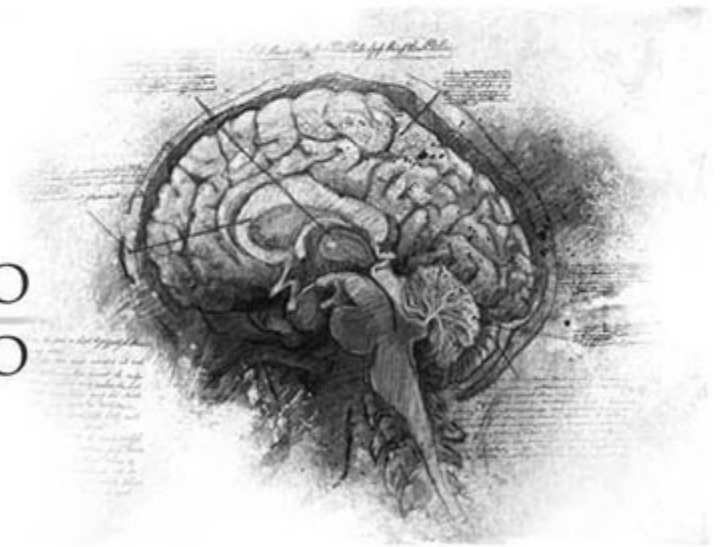
	Balance	Symptom	Syndrom	Madness
TRAUMA :	●●●●○	○○○○○	○○○○○	○○○○○
Hardening:	○○○○○	○○○○○	○○○○○	○○○○○

Disorder: *Mélancolie*

Str./Weak:

Scarring :

Special Ability:



# Personnality

Conscience : 7

Instinct : 6

Orientation : *Rationnelle*

Character traits : *Quality : Unshakable*

*Flaw : Insensitive*

# Faults

*Passion* : 3

*Subversion* : 3

*Influence* : 2

*Doubt* : 2

*Guilt* : 5

# Experience Points

Reste : 40

Total : 100

Highlights :

