

# Ombres d'Esteren

## CHARACTER SHEET

Name: Test artisan

Player: Poppy

Sex: H Age: 27 Ethnicity: Tri-Kazel

Profession: Craftsman

Description: \_\_\_\_\_

### Ways

Combativeness: 2

Empathy: 4

Creativity: 5

Reason: 3

Conviction: 1

### Advantages

Bonne vue

Nimble x2

Lettré

### Disadvantages

Enemy

Fragile

Obtuse

### Health Condition

Good 00000

Okay -1 00000

Bad -2 0000

Critical -3 0000

Agony 0



Stamina: 10

Survival: 2

## Domains & Disciplines

### Craft

●●●●●+(CREA:5)

Bonus: Malus:

Disc: Woodworking 6

Disc:

Disc:

### Close Combat

●○○○○+(COMB:2)

Bonus: Malus:

Disc:

Disc:

Disc:

### Stealth

●●●○○+(EMP:4)

Bonus: +2 Malus:

Disc:

Disc:

Disc:

### Erudition

●●●○○+(REA:3)

Bonus: +1 Malus:

Disc:

Disc:

Disc:

### Magience

○○○○○+(REA:3)

Bonus: Malus:

Disc:

Disc:

Disc:

### Natural env.

○○○○○+(EMP:4)

Bonus: Malus:

Disc:

Disc:

Disc:

### Demorthen Mys.

○○○○○+(EMP:4)

Bonus: Malus: ~1

Disc:

Disc:

Disc:

### Occultism

○○○○○+(REA:3)

Bonus: Malus:

Disc:

Disc:

Disc:

### Perception

●●●○○+(REA:3)

Bonus: +1 Malus:

Disc:

Disc:

Disc:

### Prayer

○○○○○+(CONV:1)

Bonus: Malus:

Disc:

Disc:

Disc:

### Feats

○○○○○+(COMB:2)

Bonus: +2 Malus:

Disc:

Disc:

Disc:

### Relation

●○○○○+(EMP:4)

Bonus: Malus: ~1

Disc:

Disc:

Disc:

### Performance

○○○○○+(CREA:5)

Bonus: Malus:

Disc:

Disc:

Disc:

### Science

●●●●●+(REA:3)

Bonus: Malus:

Disc:

Disc:

Disc:

### Shooting & throw.

●●●●●+(COMB:2)

Bonus: +1 Malus:

Disc:

Disc:

Disc:

### Travel

○○○○○+(EMP:4)

Bonus: Malus: ~1

Disc:

Disc:

Disc:



# Weapons

Dagger, knife, dirk      dmg: 1  
 Bow                              dmg: 2  
 \_\_\_\_\_                      dmg:  
 \_\_\_\_\_                      dmg:  
 \_\_\_\_\_                      dmg:

Potential: 3

# Combat attitudes

Cà/Tir

- ⊕ Standard  
Atk: 3/8 Def: 14 Spd: 6
- ⊕ Offensive  
Atk: 6/11 Def: 11 Spd: 6
- ⊕ Defensive  
Atk: 0/5 Def: 17 Spd: 6
- ⊕ Quick  
Atk: 3/8 Def: 11 Spd: 9
- ⊕ Movement  
Atk: 0/0 Def: 17 Spd: 6

# Defense :

00000 00000

# Speed:

00000

# Armor:

Leather tunic (1)



# ⊕ Equipment

\_\_\_\_\_  
 \_\_\_\_\_  
 \_\_\_\_\_  
 \_\_\_\_\_  
 \_\_\_\_\_  
 \_\_\_\_\_  
 \_\_\_\_\_  
 \_\_\_\_\_

# ⊕ Treasure

- 0      ⊕ Ember
- 0      ⊕ Azure
- 0      ⊕ Frost

# Valuables

\_\_\_\_\_  
 \_\_\_\_\_

# ⊕ Artifacts

\_\_\_\_\_  
 \_\_\_\_\_  
 \_\_\_\_\_

# ⊕ Combat arts

\_\_\_\_\_  
 \_\_\_\_\_  
 \_\_\_\_\_

# ⊕ Resources

00000 00000 00000  
 00000 00000 00000  
 00000 00000 00000

# Rindath

Score: 11 / 11



# Ogham:

⊕ \_\_\_\_\_  
 ⊕ \_\_\_\_\_  
 ⊕ \_\_\_\_\_  
 ⊕ \_\_\_\_\_  
 ⊕ \_\_\_\_\_  
 ⊕ \_\_\_\_\_

# Exaltation

Score: 3 / 3



# ⊕ Major miracles:

\_\_\_\_\_  
 \_\_\_\_\_  
 \_\_\_\_\_

# ⊕ Minor miracles:

\_\_\_\_\_  
 \_\_\_\_\_  
 \_\_\_\_\_

# Flux



## Mineral Flux

00000 00000 00000

## Vegetal Flux

00000 00000 00000

## Organic Flux

00000 00000 00000

## Fossil Flux

00000 00000 00000



# History

Birthplace: Taol-Kaer - Dukedom of Sedl - Urbain

Social class: Craftsman

Setbacks: Adversary - Rumor

---

---

---

---

---

---

---

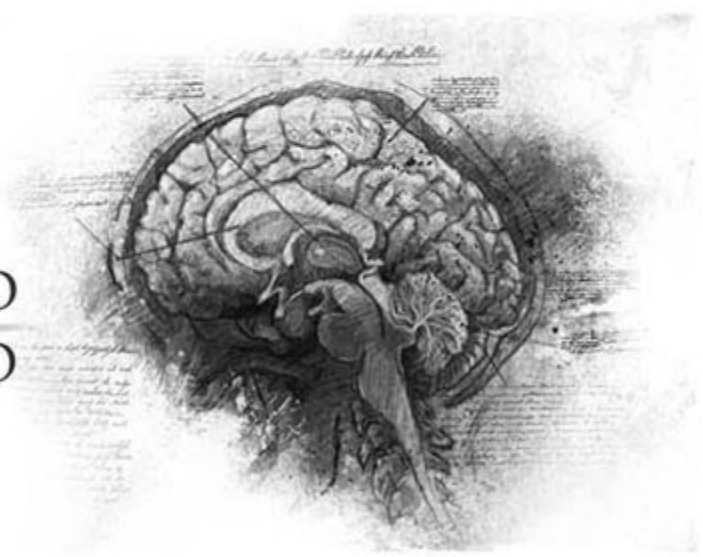
---

# Mental health

Mental Resistance: 6

	Balance	Symptom	Syndrom	Madness
TRAUMA :	●●●○○	○○○○○	○○○○○	○○○○○
Hardening:	○○○○○	○○○○○	○○○○○	○○○○○

Disorder: **Confusion mentale**    Str./Weak:  
 Scarring :                                      Special Ability:



# Personnality

Conscience : 4    Instinct : 7                      Orientation : *Instinctive*

Character traits : **Quality : Inventive**  
**Flaw : Treacherous**

---

---

---

---

---

---

---

---

# Faults

**Passion :**                      2  
**Subversion :**                5  
**Influence :**                   4  
**Doubt :**                        3  
**Guilt :**                         1



# Experience Points

Reste : 0    Total : 100

Highlights : \_\_\_\_\_

---

---

---

---

---

---

---

---