

# Ombres d'Esteren

## CHARACTER SHEET

Name: Trinkets Player: Carl  
 Sex: H Age: 21 Ethnicity: Carish Profession: Craftsman  
 Description: \_\_\_\_\_

### Ways

Combativeness: 2  
 Empathy: 2  
 Creativity: 5  
 Reason: 3  
 Conviction: 3

### Advantages

Charismatic  
 Intuitive  
 Smart  
 Survival Instinct  
 Disadvantages  
 Unlucky  
 Awkward x2

### Health Condition

Good	00000
Okay	-1 00000
Bad	-2 00000
Critical	-3 00000
Agony	0



Stamina: 10  
 Survival: 4

## Domains & Disciplines

### Craft

●●●●●+(CREA:5)  
 Bonus: Malus:  
 Disc: Cooking 6  
 Disc: Sculpting 6  
 Disc:

### Close Combat

●○○○○+(COMB:2)  
 Bonus: Malus:  
 Disc:  
 Disc:  
 Disc:

### Stealth

●○○○○+(EMP:2)  
 Bonus: Malus: ~2  
 Disc:  
 Disc:  
 Disc:

### Erudition

○○○○○+(REA:3)  
 Bonus: Malus:  
 Disc:  
 Disc:  
 Disc:

### Magience

○○○○○+(REA:3)  
 Bonus: +1 Malus:  
 Disc:  
 Disc:  
 Disc:

### Natural env.

●●○○○+(EMP:2)  
 Bonus: Malus:  
 Disc:  
 Disc:  
 Disc:

### Demorthen Mys.

○○○○○+(EMP:2)  
 Bonus: +1 Malus:  
 Disc:  
 Disc:  
 Disc:

### Occultism

○○○○○+(REA:3)  
 Bonus: +1 Malus:  
 Disc:  
 Disc:  
 Disc:

### Perception

○○○○○+(REA:3)  
 Bonus: Malus:  
 Disc:  
 Disc:  
 Disc:

### Prayer

○○○○○+(CONV:3)  
 Bonus: Malus:  
 Disc:  
 Disc:  
 Disc:

### Feats

○○○○○+(COMB:2)  
 Bonus: Malus: ~2  
 Disc:  
 Disc:  
 Disc:

### Relation

●●●●○+(EMP:2)  
 Bonus: +2 Malus:  
 Disc:  
 Disc:  
 Disc:

### Performance

●●○○○+(CREA:5)  
 Bonus: +1 Malus:  
 Disc:  
 Disc:  
 Disc:

### Science

○○○○○+(REA:3)  
 Bonus: +1 Malus:  
 Disc:  
 Disc:  
 Disc:

### Shooting & throw.

●●○○○+(COMB:2)  
 Bonus: Malus:  
 Disc:  
 Disc:  
 Disc:

### Travel

●○○○○+(EMP:2)  
 Bonus: +1 Malus:  
 Disc:  
 Disc:  
 Disc:



# Weapons

Dagger, knife, dirk      dmg: 1  
 Craftsman's hammer      dmg: 2  
 \_\_\_\_\_      dmg:  
 \_\_\_\_\_      dmg:  
 \_\_\_\_\_      dmg:

Potential: 3

# Combat attitudes

CàC/Tir

- ⊕ Standard  
Atk: 3/4 Def: 8 Spd: 4
- ⊕ Offensive  
Atk: 6/7 Def: 5 Spd: 4
- ⊕ Defensive  
Atk: 0/1 Def: 11 Spd: 4
- ⊕ Quick  
Atk: 3/4 Def: 5 Spd: 7
- ⊕ Movement  
Atk: 0/0 Def: 11 Spd: 4

# Defense :

00000 00000

# Speed:

00000

# Armor:

Leather tunic (1)



# ⊕ Equipment

\_\_\_\_\_  
 \_\_\_\_\_  
 \_\_\_\_\_  
 \_\_\_\_\_  
 \_\_\_\_\_  
 \_\_\_\_\_  
 \_\_\_\_\_  
 \_\_\_\_\_

# ⊕ Treasure

- 0      ⊕ Ember
- 0      ⊕ Azure
- 0      ⊕ Frost

# Valuables

\_\_\_\_\_  
 \_\_\_\_\_  
 \_\_\_\_\_

# ⊕ Artifacts

\_\_\_\_\_  
 \_\_\_\_\_  
 \_\_\_\_\_

# ⊕ Combat arts

\_\_\_\_\_  
 \_\_\_\_\_  
 \_\_\_\_\_

# ⊕ Resources

00000 00000 00000  
 00000 00000 00000  
 00000 00000 00000

# Rindath



Score: 9 / 9

# Ogham:

⊕ \_\_\_\_\_  
 ⊕ \_\_\_\_\_  
 ⊕ \_\_\_\_\_  
 ⊕ \_\_\_\_\_  
 ⊕ \_\_\_\_\_  
 ⊕ \_\_\_\_\_

# Exaltation



Score: 9 / 9

# ⊕ Major miracles:

\_\_\_\_\_  
 \_\_\_\_\_  
 \_\_\_\_\_

# ⊕ Minor miracles:

\_\_\_\_\_  
 \_\_\_\_\_  
 \_\_\_\_\_

# Flux



## Mineral Flux

00000 00000 00000

## Vegetal Flux

00000 00000 00000

## Organic Flux

00000 00000 00000

## Fossil Flux

00000 00000 00000



# History

Birthplace: Reizh - Tri-Sweszörs archipelago - Rural

Social class: Craftsman

Setbacks: Rumor

# Mental health

Mental Resistance: 8

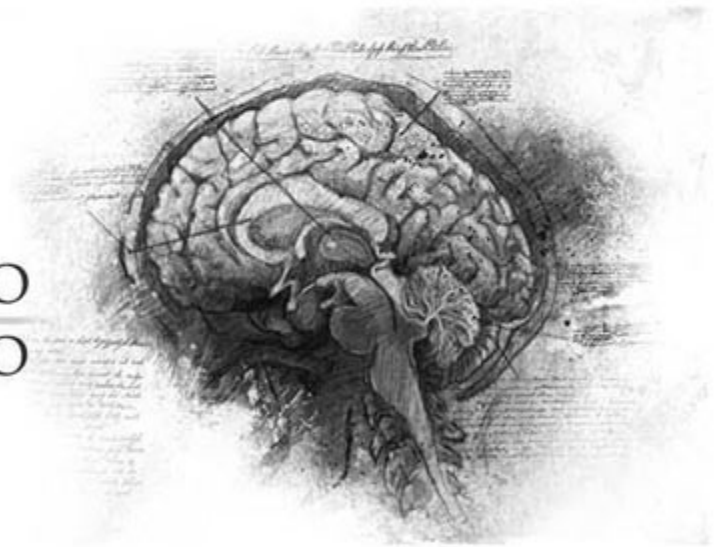
	Balance	Symptom	Syndrom	Madness
TRAUMA :	● ○ ○ ○ ○ ○	○ ○ ○ ○ ○ ○	○ ○ ○ ○ ○ ○	○ ○ ○ ○ ○ ○
Hardening:	○ ○ ○ ○ ○ ○	○ ○ ○ ○ ○ ○	○ ○ ○ ○ ○ ○	○ ○ ○ ○ ○ ○

Disorder: *Mélancolie*

Str./Weak:

Scarring :

Special Ability:



# Personnality

Conscience : 6

Instinct : 7

Orientation : *Instinctive*

Character traits : *Quality : Inventive*

*Flaw : Eccentric*

# Faults

Passion : 2

Subversion : 5

Influence : 2

Doubt : 3

Guilt : 3

# Experience Points

Reste : 5

Total : 100

Highlights :

