

# Les Ombres d'Esteren

## Character Sheet

Name: Lesley Player: \_\_\_\_\_  
 Sex: H Age: 29 Ethnicity: Tarish Profession: Varigal  
 Description: \_\_\_\_\_

### Ways

Combativeness: 4

Empathy: 5

Creativity: 2

Reason: 1

Conviction: 3

### Advantages

Strong

Intuitive

### Disadvantages

Unlucky

Shy

### Health Condition

Good 0 0 0 0 0

Okay -1 0 0 0 0 0

Bad -2 0 0 0 0

Critical -3 0 0 0 0

Agony 0



Stamina: 9

Survival: 3

## Domains & Disciplines

### Craft

0 0 0 0 0 + (CREA: 2)

Bonus: Malus:

Disc:

Disc:

Disc:

### Close Combat

0 0 0 0 0 + (COMB: 4)

Bonus: +1 Malus:

Disc:

Disc:

Disc:

### Stealth

0 0 0 0 0 + (EMP: 5)

Bonus: Malus:

Disc:

Disc:

Disc:

### Erudition

0 0 0 0 0 + (REA: 1)

Bonus: Malus:

Disc:

Disc:

Disc:

### Magience

0 0 0 0 0 + (REA: 1)

Bonus: Malus:

Disc:

Disc:

Disc:

### Natural env.

0 0 0 0 0 + (EMP: 5)

Bonus: Malus:

Disc:

Disc:

Disc:

### Demorthen Mys.

0 0 0 0 0 + (EMP: 5)

Bonus: +1 Malus:

Disc:

Disc:

Disc:

### Occultism

0 0 0 0 0 + (REA: 1)

Bonus: Malus:

Disc:

Disc:

Disc:

### Perception

0 0 0 0 0 + (REA: 1)

Bonus: Malus:

Disc:

Disc:

Disc:

### Prayer

0 0 0 0 0 + (CONV: 3)

Bonus: Malus:

Disc:

Disc:

Disc:

### Feats

0 0 0 0 0 + (COMB: 4)

Bonus: +1 Malus:

Disc: Climbing

6

Disc:

Disc:

### Relation

0 0 0 0 0 + (EMP: 5)

Bonus: +1 Malus: ~1

Disc:

Disc:

Disc:

### Performance

0 0 0 0 0 + (CREA: 2)

Bonus: Malus: ~1

Disc:

Disc:

Disc:

### Science

0 0 0 0 0 + (REA: 1)

Bonus: Malus:

Disc:

Disc:

Disc:

### Shooting & throw.

0 0 0 0 0 + (COMB: 4)

Bonus: +1 Malus:

Disc:

Disc:

Disc:

### Travel

0 0 0 0 0 + (EMP: 5)

Bonus: +1 Malus:

Disc: Signs (Varigal)

6

Disc:

Disc:



## Weapons

Dagger, knife, dirk      dmg: 1

Carath                      dmg: 2

Short sword                dmg: 2

\_\_\_\_\_                    dmg: \_\_\_\_\_

\_\_\_\_\_                    dmg: \_\_\_\_\_

Potential: 2

## Combat attitudes

CàC/Tir

⊕ Standard  
Atk: 9/5 Def: 11 Spd: 9

⊕ Offensive  
Atk: 11/7 Def: 9 Spd: 9

⊕ Defensive  
Atk: 7/3 Def: 13 Spd: 9

⊕ Quick  
Atk: 9/5 Def: 9 Spd: 11

⊕ Movement  
Atk: 0/0 Def: 13 Spd: 9

## Defense :

000000 000000

## Speed:

000000

## Armor:

Studded leather tunic (2)



## Equipment

Travelling rations, 10 days

Boots

Clothes & spares

Leather gloves

Wool cloak

Wash cloth & soap

Backpack

Bowl, cup, plate & cutlery

Tent, 1 person

Sleeping bag

Tinder box

Waterskin

Caernide & tack

Oil lantern

2 pints of oil

30 feet of rope



## Treasure

0



Ember

0



Azure

0



Frost

## Valuables



## Artifacts



## Combat arts



## Resources

000000 000000 000000

000000 000000 000000

000000 000000 000000

## Rindath

Score : 11 / 11



## Ogham:



## Exaltation

Score : 9 / 9



## Major miracles:



## Minor miracles:

## Flux



Mineral Flux

000000 000000 000000

Vegetal Flux

000000 000000 000000

Organic Flux

000000 000000 000000

Fossil Flux

000000 000000 000000





## History

Birthplace: Taol-Kaer - Dukedom of Salann Tir - Rural

Social class: Peasant

Setbacks: Illness - Poverty

You have been hired by the Duchess of Tulg to guide a party to Pass of Lantrecht near the Vale of Dearg. Once they have completed their work, you are to guide those that need to return, home. You report to the knight and a clause in the contract allows the knight to call on your help if needed. You will be paid extra.

## Mental health

Mental Resistance: 8

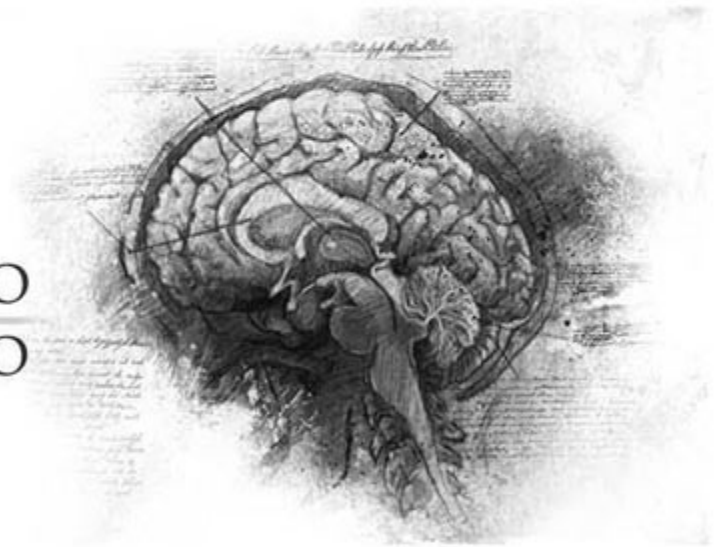
	Balance	Symptom	Syndrom	Madness
TRAUMA :	●●○○○	○○○○○	○○○○○	○○○○○
Hardening:	○○○○○	○○○○○	○○○○○	○○○○○

Disorder: *Mysticisme*

Str./Weak:

Scarring :

Special Ability:



## Personnality

Conscience : 4

Instinct : 6

Orientation : *Instinctive*

Character traits : *Quality : Intuitive*

*Flaw : Awkward*

## Faults

Passion : 4

Subversion : 2

Influence : 5

Doubt : 1

Guilt : 3

## Experience Points

Reste : 0

Total : 100

Highlights :

