

# Ombres d'Esteren

## CHARACTER SHEET

Name: Ironclad Player: Americ  
 Sex: H Age: 30 Ethnicity: Tarish Profession: Merchant  
 Description: \_\_\_\_\_

### Ways

Combativeness: 2  
 Empathy: 4  
 Creativity: 5  
 Reason: 3  
 Conviction: 1

### Advantages

Financial Ease 4

### Disadvantages

Slow Witted

### Health Condition

Good 0 0 0 0 0

Okay -1 0 0 0 0 0

Bad -2 0 0 0 0

Critical -3 0 0 0 0

Agony 0



Stamina: 10

Survival: 3

## Domains & Disciplines

### Craft

●●●●●+(CREA: 5)  
 Bonus: Malus:  
 Disc: Smithing 6  
 Disc:  
 Disc:

### Close Combat

●●○○○+(COMB: 2)  
 Bonus: Malus:  
 Disc:  
 Disc:  
 Disc:

### Stealth

●●●●●+(EMP: 4)  
 Bonus: Malus:  
 Disc:  
 Disc:  
 Disc:

### Erudition

○○○○○+(REA: 3)  
 Bonus: Malus:  
 Disc:  
 Disc:  
 Disc:

### Magience

○○○○○+(REA: 3)  
 Bonus: Malus: ~1  
 Disc:  
 Disc:  
 Disc:

### Natural env.

●●●○○+(EMP: 4)  
 Bonus: Malus:  
 Disc:  
 Disc:  
 Disc:

### Demorthen Mys.

○○○○○+(EMP: 4)  
 Bonus: Malus:  
 Disc:  
 Disc:  
 Disc:

### Occultism

○○○○○+(REA: 3)  
 Bonus: Malus: ~1  
 Disc:  
 Disc:  
 Disc:

### Perception

○○○○○+(REA: 3)  
 Bonus: Malus:  
 Disc:  
 Disc:  
 Disc:

### Prayer

○○○○○+(CONV: 1)  
 Bonus: Malus:  
 Disc:  
 Disc:  
 Disc:

### Feats

●●●○○+(COMB: 2)  
 Bonus: Malus:  
 Disc:  
 Disc:  
 Disc:

### Relation

●●●●●+(EMP: 4)  
 Bonus: Malus:  
 Disc: Persuasion 6  
 Disc:  
 Disc:

### Performance

○○○○○+(CREA: 5)  
 Bonus: Malus:  
 Disc:  
 Disc:  
 Disc:

### Science

○○○○○+(REA: 3)  
 Bonus: Malus: ~1  
 Disc:  
 Disc:  
 Disc:

### Shooting & throw.

●●●○○+(COMB: 2)  
 Bonus: Malus:  
 Disc:  
 Disc:  
 Disc:

### Travel

○○○○○+(EMP: 4)  
 Bonus: Malus:  
 Disc:  
 Disc:  
 Disc:



# Weapons

Dagger, knife, dirk      dmg: 1  
 Bow                              dmg: 2  
 Craftsman's hammer      dmg: 2  
 \_\_\_\_\_                      dmg:  
 \_\_\_\_\_                      dmg:

Potential: 3

# Combat attitudes

CàC/Tir

- ⊕ Standard  
Atk: 4/5 Def: 12 Spd: 6
- ⊕ Offensive  
Atk: 7/8 Def: 9 Spd: 6
- ⊕ Defensive  
Atk: 1/2 Def: 15 Spd: 6
- ⊕ Quick  
Atk: 4/5 Def: 9 Spd: 9
- ⊕ Movement  
Atk: 0/0 Def: 15 Spd: 6

# Defense :

00000 00000

# Speed:

00000

# Armor:

Leather tunic (1)



# ⊕ Equipment

---

---

---

---

---

---

---

---

---

---

# ⊕ Treasure

0      ⊕ Ember  
 0      ⊕ Azure  
 100      ⊕ Frost

# Valuables

---

---

---

---

# ⊕ Artifacts

---

---

---

# ⊕ Combat arts

---

---

---

# ⊕ Resources

00000 00000 00000  
 00000 00000 00000  
 00000 00000 00000

# Rindath

Score: 11 / 11



# Ogham:



# Exaltation

Score: 3 / 3



# ⊕ Major miracles:

---

---

---

# ⊕ Minor miracles:

---

---

---

# Flux



## Mineral Flux

00000 00000 00000

## Vegetal Flux

00000 00000 00000

## Organic Flux

00000 00000 00000

## Fossil Flux

00000 00000 00000



# History

Birthplace: Taol-Kaer - Dukedom of Osta-Baille - Urbain

Social class: Craftsman

Setbacks: Tragic Love - Solitude

# Mental health

Mental Resistance: 6

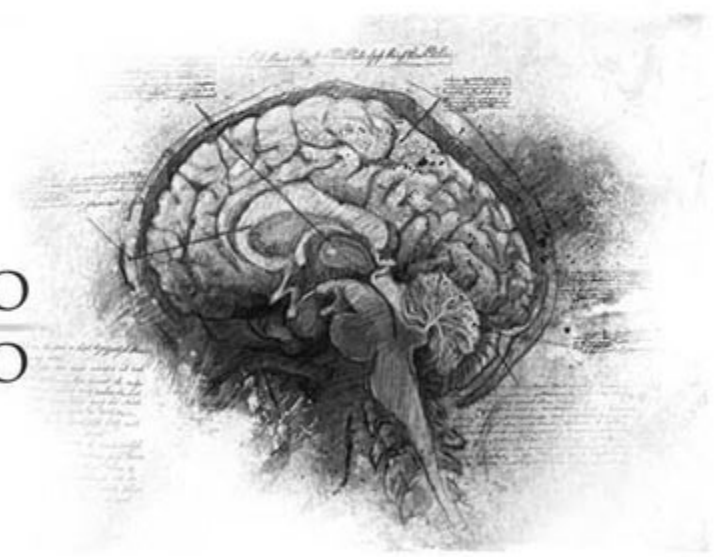
	Balance	Symptom	Syndrom	Madness
TRAUMA :	●●●●○	○○○○○	○○○○○	○○○○○
Hardening:	○○○○○	○○○○○	○○○○○	○○○○○

Disorder: Hallucination

Str./Weak:

Scarring :

Special Ability:



# Personnality

Conscience : 4

Instinct : 7

Orientation : Instinctive

Character traits : Quality : Inventive

Flaw : Cowardly

# Faults

Passion : 2

Subversion : 5

Influence : 4

Doubt : 3

Guilt : 1

# Experience Points

Reste : 0

Total : 100

Highlights :

