

# Ombres d'Esteren

## CHARACTER SHEET

Name: Estalia

Player: Maxwime

Sex: F Age: 35 Ethnicity: Tarish

Profession: Bard

Description: bah c'est moué

### Ways

Combativeness: 1

Empathy: 5

Creativity: 4

Reason: 3

Conviction: 2

### Advantages

Charismatic x2

Keen Hearing

### Disadvantages

Boiteuse

Weak

Laide

### Health Condition

Good 00000

Okay -1 00000

Bad -2 0000

Critical -3 0000

Agony 0



Stamina: 9

Survival: 3

## Domains & Disciplines

### Craft

OOOOO+(CREA:4)

Bonus: Malus:

Disc:

Disc:

Disc:

### Close Combat

●OOOO+(COMB:1)

Bonus: Malus: ~1

Disc:

Disc:

Disc:

### Stealth

●●●OO+(EMP:5)

Bonus: Malus:

Disc:

Disc:

Disc:

### Erudition

●OOOO+(REA:3)

Bonus: Malus:

Disc:

Disc:

Disc:

### Magience

OOOOO+(REA:3)

Bonus: Malus:

Disc:

Disc:

Disc:

### Natural env.

●OOOO+(EMP:5)

Bonus: Malus:

Disc:

Disc:

Disc:

### Demorthèn Mys.

OOOOO+(EMP:5)

Bonus: Malus:

Disc:

Disc:

Disc:

### Occultism

●●OOO+(REA:3)

Bonus: Malus:

Disc:

Disc:

Disc:

### Perception

●●●●O+(REA:3)

Bonus: +1 Malus:

Disc:

Disc:

Disc:

### Prayer

OOOOO+(CONV:2)

Bonus: Malus:

Disc:

Disc:

Disc:

### Feats

OOOOO+(COMB:1)

Bonus: Malus: ~1

Disc:

Disc:

Disc:

### Relation

●●●●●+(EMP:5)

Bonus: +2 Malus: ~1

Disc: Persuasion

6

Disc:

Disc:

### Performance

●●●●●+(CREA:4)

Bonus: +2 Malus: ~1

Disc: Acting

6

Disc:

Disc:

### Science

OOOOO+(REA:3)

Bonus: Malus:

Disc:

Disc:

Disc:

### Shooting & throw.

●●OOO+(COMB:1)

Bonus: Malus: ~1

Disc:

Disc:

Disc:

### Travel

●●●OO+(EMP:5)

Bonus: Malus:

Disc:

Disc:

Disc:



# Weapons

Dagger, knife, dirk      dmg: 1  
 Sling                              dmg: 1  
 \_\_\_\_\_                      dmg:  
 \_\_\_\_\_                      dmg:  
 \_\_\_\_\_                      dmg:

Potential: 2

# Combat attitudes

CàC/Tir

- ⊕ Standard  
Atk: 1/2 Def: 12 Spd: 5
- ⊕ Offensive  
Atk: 3/4 Def: 10 Spd: 5
- ⊕ Defensive  
Atk: -1/0 Def: 14 Spd: 5
- ⊕ Quick  
Atk: 1/2 Def: 10 Spd: 7
- ⊕ Movement  
Atk: 0/0 Def: 14 Spd: 5

# Defense :

00000 00000

# Speed:

00000

# Armor:



# ⊕ Equipment

\_\_\_\_\_  
 \_\_\_\_\_  
 \_\_\_\_\_  
 \_\_\_\_\_  
 \_\_\_\_\_  
 \_\_\_\_\_  
 \_\_\_\_\_  
 \_\_\_\_\_

# ⊕ Treasure

0      ⊕ Ember  
 0      ⊕ Azure  
 0      ⊕ Frost

# Valuables

\_\_\_\_\_  
 \_\_\_\_\_

# ⊕ Artifacts

\_\_\_\_\_  
 \_\_\_\_\_  
 \_\_\_\_\_

# ⊕ Combat arts

\_\_\_\_\_  
 \_\_\_\_\_  
 \_\_\_\_\_

# ⊕ Resources

00000 00000 00000  
 00000 00000 00000  
 00000 00000 00000

# Rindath



Score: 10 / 10

# Ogham:

⊕ \_\_\_\_\_  
 ⊕ \_\_\_\_\_  
 ⊕ \_\_\_\_\_  
 ⊕ \_\_\_\_\_  
 ⊕ \_\_\_\_\_  
 ⊕ \_\_\_\_\_

# Exaltation



Score: 6 / 6

# ⊕ Major miracles:

\_\_\_\_\_  
 \_\_\_\_\_  
 \_\_\_\_\_

# ⊕ Minor miracles:

\_\_\_\_\_  
 \_\_\_\_\_  
 \_\_\_\_\_

# Flux



## Mineral Flux

00000 00000 00000

## Vegetal Flux

00000 00000 00000

## Organic Flux

00000 00000 00000

## Fossil Flux

00000 00000 00000





# History

Birthplace: Taol-Kaer - Dukedom of Tulg - Rural  
Social class: Clerge  
Setbacks: Wound - Solitude - Poverty

lalalalala

---

---

---

---

---

---

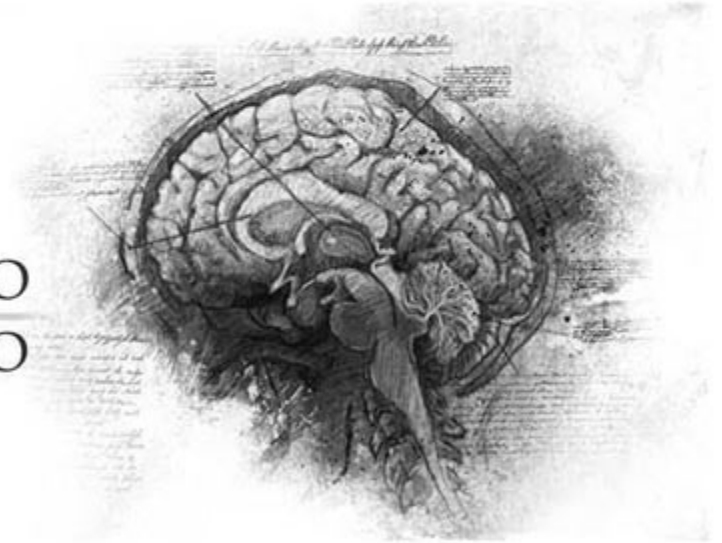
---

# Mental health

Mental Resistance: 7

	Balance	Symptom	Syndrom	Madness
TRAUMA :	OOOOOO	OOOOOO	OOOOOO	OOOOOO
Hardening:	OOOOOO	OOOOOO	OOOOOO	OOOOOO

Disorder: **Confusion mentale**      Str./Weak:  
Scarring :                                      Special Ability:



# Personnality

Conscience : 5      Instinct : 5      Orientation : *Instinctive*

Character traits : **Quality : Inventive**  
**Flaw : Menteuse**

---

---

---

---

---

# Faults

**Passion :** 1  
**Subversion :** 4  
**Influence :** 5  
**Doubt :** 3  
**Guilt :** 2



# Experience Points

Reste : 5      Total : 100

Highlights : eh oui

---

---

---

---

---