

# Ombres d'Esteren

## CHARACTER SHEET

Name: frère Alex

Player: Devius

Sex: H Age: 22 Ethnicity: Tri-Kazel

Profession: Vector of the Temple

Description: \_\_\_\_\_

### Ways

Combativeness: 4

Empathy: 2

Creativity: 1

Reason: 3

Conviction: 5

### Advantages

Quick

### Disadvantages

Enemy

### Health Condition

Good 00000

Okay -1 00000

Bad -2 0000

Critical -3 0000

Agony 0



Stamina: 10

Survival: 3

## Domains & Disciplines

### Craft

OOOOO+(CREA:1)

Bonus: Malus:

Disc:

Disc:

Disc:

### Close Combat

●OOOO+(COMB:4)

Bonus: Malus:

Disc:

Disc:

Disc:

### Stealth

OOOOO+(EMP:2)

Bonus: Malus:

Disc:

Disc:

Disc:

### Erudition

●OOOO+(REA:3)

Bonus: Malus:

Disc:

Disc:

Disc:

### Magience

OOOOO+(REA:3)

Bonus: Malus:

Disc:

Disc:

Disc:

### Natural env.

●●●●●+(EMP:2)

Bonus: Malus:

Disc: Animal Training 6

Disc: Fauna and Flora 6

Disc: First Aid 6

### Demorthen Mys.

OOOOO+(EMP:2)

Bonus: Malus:

Disc:

Disc:

Disc:

### Occultism

●OOOO+(REA:3)

Bonus: Malus:

Disc:

Disc:

Disc:

### Perception

OOOOO+(REA:3)

Bonus: Malus:

Disc:

Disc:

Disc:

### Prayer

●●●●●+(CONV:5)

Bonus: Malus:

Disc: Concentration 6

Disc: Miracles 6

Disc:

### Feats

OOOOO+(COMB:4)

Bonus: Malus:

Disc:

Disc:

Disc:

### Relation

●●OOO+(EMP:2)

Bonus: Malus:

Disc:

Disc:

Disc:

### Performance

OOOOO+(CREA:1)

Bonus: Malus:

Disc:

Disc:

Disc:

### Science

●●OOO+(REA:3)

Bonus: Malus:

Disc:

Disc:

Disc:

### Shooting & throw.

OOOOO+(COMB:4)

Bonus: Malus:

Disc:

Disc:

Disc:

### Travel

●●●OO+(EMP:2)

Bonus: Malus:

Disc:

Disc:

Disc:



# Weapons

Dagger, knife, dirk      dmg: 1  
 Claymore                    dmg: 4  
 \_\_\_\_\_                    dmg:  
 \_\_\_\_\_                    dmg:  
 \_\_\_\_\_                    dmg:

Potential: 1

# Combat attitudes

CàC/Tir

- ⊕ Standard  
Atk: 5/4 Def: 10 Spd: 7
- ⊕ Offensive  
Atk: 6/5 Def: 9 Spd: 7
- ⊕ Defensive  
Atk: 4/3 Def: 11 Spd: 7
- ⊕ Quick  
Atk: 5/4 Def: 9 Spd: 8
- ⊕ Movement  
Atk: 0/0 Def: 11 Spd: 7

# Defense :

00000 00000

# Speed:

00000

# Armor:

- Studded leather tunic (2)
- Chain mail (3)
- Large shield (1)



# ⊕ Equipment

\_\_\_\_\_  
 \_\_\_\_\_  
 \_\_\_\_\_  
 \_\_\_\_\_  
 \_\_\_\_\_  
 \_\_\_\_\_  
 \_\_\_\_\_  
 \_\_\_\_\_

# ⊕ Treasure

- 0      ⊕ Ember
- 0      ⊕ Azure
- 0      ⊕ Frost

# Valuables

\_\_\_\_\_  
 \_\_\_\_\_  
 \_\_\_\_\_

# ⊕ Artifacts

\_\_\_\_\_  
 \_\_\_\_\_  
 \_\_\_\_\_

# ⊕ Combat arts

\_\_\_\_\_  
 \_\_\_\_\_  
 \_\_\_\_\_

# ⊕ Resources

00000 00000 00000  
 00000 00000 00000  
 00000 00000 00000

# Rindath



Score: 7 / 7

# Ogham:



# Exaltation



Score: 20 / 20

# ⊕ Major miracles:

\_\_\_\_\_  
 \_\_\_\_\_  
 \_\_\_\_\_

# ⊕ Minor miracles:

\_\_\_\_\_  
 \_\_\_\_\_  
 \_\_\_\_\_

# Flux



## Mineral Flux

00000 00000 00000

## Vegetal Flux

00000 00000 00000

## Organic Flux

00000 00000 00000

## Fossil Flux

00000 00000 00000





# History

Birthplace: Gwidre - Region of Ard-Amrath - Urbain  
Social class: Clerge  
Setbacks: Poverty

---

---

---

---

---

---

---

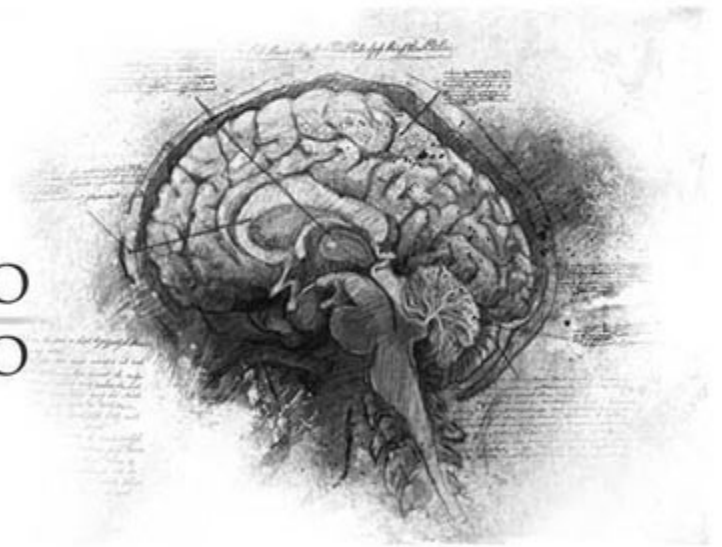
---

# Mental health

Mental Resistance: 10

	Balance	Symptom	Syndrom	Madness
TRAUMA :	●●●○○	○○○○○	○○○○○	○○○○○
Hardening:	○○○○○	○○○○○	○○○○○	○○○○○

Disorder: *Mimétisme*                      Str./Weak:  
Scarring :                                      Special Ability:



# Personnality

Conscience : 8      Instinct : 5                      Orientation : *Rationnelle*

Character traits : *Quality : Cool-headed*  
*Flaw : Rigid*

---

---

---

---

---

---

---

---

# Faults

*Passion* : 4  
*Subversion* : 1  
*Influence* : 2  
*Doubt* : 3  
*Guilt* : 5



# Experience Points

Reste : 5      Total : 110

Highlights : \_\_\_\_\_

---

---

---

---

---

---

---

---