

# Ombres d'Esteren

## CHARACTER SHEET

Name: **Atriss** Player: **Guillaume**  
 Sex: **H** Age: **20** Ethnicity: **Continent** Profession: **Hunter**  
 Description: \_\_\_\_\_

### Ways

Combativeness: **5**  
 Empathy: **4**  
 Creativity: **2**  
 Reason: **3**  
 Conviction: **1**

### Advantages

Strong

### Disadvantages

### Health Condition

Good 0 0 0 0 0

Okay -1 0 0 0 0 0

Bad -2 0 0 0 0

Critical -3 0 0 0 0

Agony 0



Stamina: **10**

Survival: **3**

## Domains & Disciplines

### Craft

0 0 0 0 0 + (CREA: 2)

Bonus: Malus:

Disc:

Disc:

Disc:

### Close Combat

● ● ● ● ● + (COMB: 5)

Bonus: +1 Malus:

Disc: Axes 6

Disc:

Disc:

### Stealth

● ● ● ● ● + (EMP: 4)

Bonus: Malus:

Disc:

Disc:

Disc:

### Erudition

0 0 0 0 0 + (REA: 3)

Bonus: Malus:

Disc:

Disc:

Disc:

### Magience

0 0 0 0 0 + (REA: 3)

Bonus: Malus:

Disc:

Disc:

Disc:

### Natural env.

● ● ● ● ● + (EMP: 4)

Bonus: Malus:

Disc: Tracking 6

Disc:

Disc:

### Demorthen Mys.

0 0 0 0 0 + (EMP: 4)

Bonus: Malus:

Disc:

Disc:

Disc:

### Occultism

0 0 0 0 0 + (REA: 3)

Bonus: Malus:

Disc:

Disc:

Disc:

### Perception

● ● ● ● ● + (REA: 3)

Bonus: Malus:

Disc:

Disc:

Disc:

### Prayer

0 0 0 0 0 + (CONV: 1)

Bonus: Malus:

Disc:

Disc:

Disc:

### Feats

● ● ● ● ● + (COMB: 5)

Bonus: +1 Malus:

Disc:

Disc:

Disc:

### Relation

● ● ● ● ● + (EMP: 4)

Bonus: Malus:

Disc:

Disc:

Disc:

### Performance

0 0 0 0 0 + (CREA: 2)

Bonus: Malus:

Disc:

Disc:

Disc:

### Science

0 0 0 0 0 + (REA: 3)

Bonus: Malus:

Disc:

Disc:

Disc:

### Shooting & throw.

0 0 0 0 0 + (COMB: 5)

Bonus: +1 Malus:

Disc:

Disc:

Disc:

### Travel

0 0 0 0 0 + (EMP: 4)

Bonus: Malus:

Disc:

Disc:

Disc:



# Weapons

Francisca \_\_\_\_\_ dmg: 2  
 Battleaxe \_\_\_\_\_ dmg: 3  
 \_\_\_\_\_ dmg:  
 \_\_\_\_\_ dmg:  
 \_\_\_\_\_ dmg:

Potential: 2

# Combat attitudes

CàC/Tir

- ⊕ Standard  
Atk: 11/6 Def: 12 Spd: 9
- ⊕ Offensive  
Atk: 13/8 Def: 10 Spd: 9
- ⊕ Defensive  
Atk: 9/4 Def: 14 Spd: 9
- ⊕ Quick  
Atk: 11/6 Def: 10 Spd: 11
- ⊕ Movement  
Atk: 0/0 Def: 14 Spd: 9

# Defense :

00000 00000

# Speed:

00000

# Armor:

Studded leather tunic (2)



# ⊕ Equipment

\_\_\_\_\_  
 \_\_\_\_\_  
 \_\_\_\_\_  
 \_\_\_\_\_  
 \_\_\_\_\_  
 \_\_\_\_\_  
 \_\_\_\_\_  
 \_\_\_\_\_

# ⊕ Treasure

0 \_\_\_\_\_  Ember  
 0 \_\_\_\_\_  Azure  
 0 \_\_\_\_\_  Frost

# Valuables

# ⊕ Artifacts

\_\_\_\_\_  
 \_\_\_\_\_  
 \_\_\_\_\_

# ⊕ Combat arts

Two-weapon fighting

\_\_\_\_\_  
 \_\_\_\_\_

# ⊕ Resources

00000 00000 00000  
 00000 00000 00000  
 00000 00000 00000

# Rindath

Score: 11 / 11



# Ogham:

 \_\_\_\_\_  
 \_\_\_\_\_  
 \_\_\_\_\_  
 \_\_\_\_\_  
 \_\_\_\_\_  
 \_\_\_\_\_

# Exaltation

Score: 3 / 3



# ⊕ Major miracles:

\_\_\_\_\_  
 \_\_\_\_\_  
 \_\_\_\_\_

# ⊕ Minor miracles:

\_\_\_\_\_  
 \_\_\_\_\_  
 \_\_\_\_\_

# Flux



## Mineral Flux

00000 00000 00000

## Vegetal Flux

00000 00000 00000

## Organic Flux

00000 00000 00000

## Fossil Flux

00000 00000 00000





# History

Birthplace: Gwidre - Calvary - Rural

Social class: Nobility

Setbacks:

---



---



---



---



---



---

# Mental health

Mental Resistance: 6

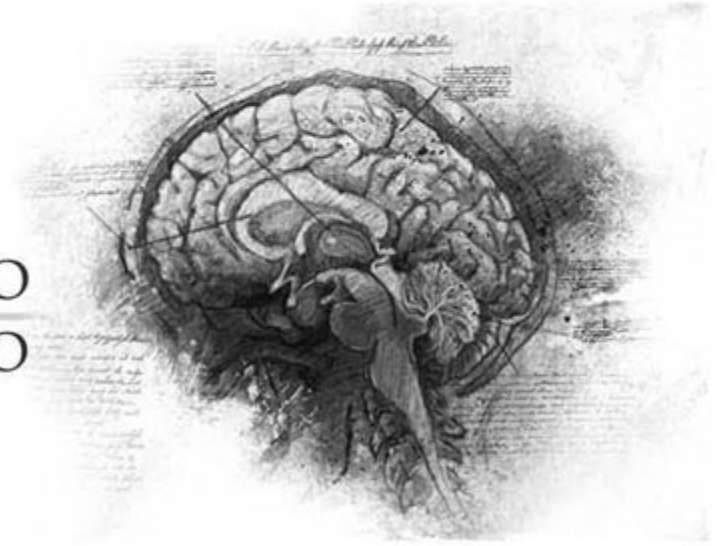
	Balance	Symptom	Syndrom	Madness
TRAUMA :	●●●○○	○○○○○	○○○○○	○○○○○
Hardening:	○○○○○	○○○○○	○○○○○	○○○○○

Disorder: *Mimétisme*

Str./Weak:

Scarring :

Special Ability:



# Personnality

Conscience : 4

Instinct : 7

Orientation : *Instinctive*

Character traits : *Quality : Disciplined*

*Flaw : Austere*

---



---



---



---



---



---

# Faults

Passion : 5

Subversion : 2

Influence : 4

Doubt : 3

Guilt : 1



# Experience Points

Reste : 5

Total : 100

Highlights :

---



---



---



---



---



---