

# Ombres d'Esteren

## CHARACTER SHEET

Name: Tenebris Player: Vincent  
 Sex: H Age: 27 Ethnicity: Continent Profession: Squire of the Temple  
 Description: \_\_\_\_\_

### Ways

Combativeness: 5  
 Empathy: 2  
 Creativity: 1  
 Reason: 2  
 Conviction: 5

### Advantages

Strong  
 Nimble x2

### Disadvantages

Enemy  
 Obtuse

Unattractive

### Health Condition

Good 00000

Okay -1 00000

Bad -2 0000

Critical -3 0000

Agony 0



Stamina: 10  
 Survival: 3

## Domains & Disciplines

### Craft

OOOOO+(CREA:1)  
 Bonus: Malus:  
 Disc:  
 Disc:  
 Disc:

### Close Combat

●●●●●+(COMB:5)  
 Bonus: +1 Malus:  
 Disc: Short Blades 6  
 Disc:  
 Disc:

### Stealth

●●●●●+(EMP:2)  
 Bonus: +2 Malus:  
 Disc:  
 Disc:  
 Disc:

### Erudition

●OOOO+(REA:2)  
 Bonus: Malus:  
 Disc:  
 Disc:  
 Disc:

### Magience

OOOOO+(REA:2)  
 Bonus: Malus:  
 Disc:  
 Disc:  
 Disc:

### Natural env.

OOOOO+(EMP:2)  
 Bonus: Malus:  
 Disc:  
 Disc:  
 Disc:

### Demorthen Mys.

OOOOO+(EMP:2)  
 Bonus: Malus: ~1  
 Disc:  
 Disc:  
 Disc:

### Occultism

OOOOO+(REA:2)  
 Bonus: Malus:  
 Disc:  
 Disc:  
 Disc:

### Perception

●●●OO+(REA:2)  
 Bonus: Malus:  
 Disc:  
 Disc:  
 Disc:

### Prayer

●●●●●+(CONV:5)  
 Bonus: Malus:  
 Disc: Miracles 6  
 Disc:  
 Disc:

### Feats

●OOOO+(COMB:5)  
 Bonus: +3 Malus:  
 Disc:  
 Disc:  
 Disc:

### Relation

●OOOO+(EMP:2)  
 Bonus: Malus: ~2  
 Disc:  
 Disc:  
 Disc:

### Performance

OOOOO+(CREA:1)  
 Bonus: Malus: ~1  
 Disc:  
 Disc:  
 Disc:

### Science

OOOOO+(REA:2)  
 Bonus: Malus:  
 Disc:  
 Disc:  
 Disc:

### Shooting & throw.

●OOOO+(COMB:5)  
 Bonus: +1 Malus:  
 Disc:  
 Disc:  
 Disc:

### Travel

OOOOO+(EMP:2)  
 Bonus: Malus: ~1  
 Disc:  
 Disc:  
 Disc:



# Weapons

Dagger, knife, dirk      dmg: 1  
 Short sword                dmg: 2  
 \_\_\_\_\_                dmg:  
 \_\_\_\_\_                dmg:  
 \_\_\_\_\_                dmg:

Potential: 1

# Combat attitudes

CàC/Tir

- ⊕ Standard  
Atk: 11/7 Def: 11 Spd: 7
- ⊕ Offensive  
Atk: 12/8 Def: 10 Spd: 7
- ⊕ Defensive  
Atk: 10/6 Def: 12 Spd: 7
- ⊕ Quick  
Atk: 11/7 Def: 10 Spd: 8
- ⊕ Movement  
Atk: 0/0 Def: 12 Spd: 7

# Defense :

00000 00000

# Speed:

00000

# Armor:

Leather tunic (1)



# ⊕ Equipment

\_\_\_\_\_  
 \_\_\_\_\_  
 \_\_\_\_\_  
 \_\_\_\_\_  
 \_\_\_\_\_  
 \_\_\_\_\_  
 \_\_\_\_\_  
 \_\_\_\_\_

# ⊕ Treasure

0      ⊕ Ember

0      ⊕ Azure

0      ⊕ Frost

# Valuables

\_\_\_\_\_  
 \_\_\_\_\_  
 \_\_\_\_\_

# ⊕ Artifacts

\_\_\_\_\_  
 \_\_\_\_\_  
 \_\_\_\_\_

# ⊕ Combat arts

Sneak Attack

Two-weapon Fighting

\_\_\_\_\_

# ⊕ Resources

00000 00000 00000

00000 00000 00000

00000 00000 00000

# Rindath

Score: 8 / 8



# Ogham:



# Exaltation

Score: 20 / 20



# ⊕ Major miracles:

\_\_\_\_\_  
 \_\_\_\_\_  
 \_\_\_\_\_

# ⊕ Minor miracles:

\_\_\_\_\_  
 \_\_\_\_\_  
 \_\_\_\_\_

# Flux



Mineral Flux

00000 00000 00000

Vegetal Flux

00000 00000 00000

Organic Flux

00000 00000 00000

Fossil Flux

00000 00000 00000





# History

Birthplace: Taol-Kaer - Dukedom of Osta-Baille - Urbain

Social class: Clerge

Setbacks: Adversary - Solitude

---

---

---

---

---

---

---

---

# Mental health

Mental Resistance: 10

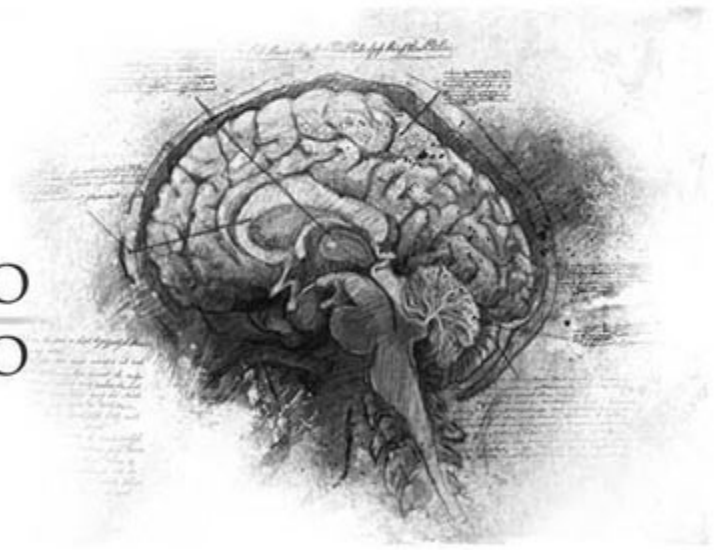
	Balance	Symptom	Syndrom	Madness
TRAUMA :	●○○○○○	○○○○○○	○○○○○○	○○○○○○
Hardening:	○○○○○○	○○○○○○	○○○○○○	○○○○○○

Disorder: *Mimétisme*

Str./Weak:

Scarring :

Special Ability:



# Personnality

Conscience : 7

Instinct : 6

Orientation : *Rationnelle*

Character traits : *Quality : Cool-headed*

*Flaw : Cold*

---

---

---

---

---

---

---

---

# Faults

Passion : 5

Subversion : 1

Influence : 2

Doubt : 2

Guilt : 5

# Experience Points

Reste : 0

Total : 100

Highlights :

---

---

---

---

---

---

---

---

