

# Ombres d'Esteren

## CHARACTER SHEET

Name: Killer Echyl Player: Michel  
 Sex: H Age: 19 Ethnicity: Continent Profession: Ranged Fighter  
 Description: x

### Ways

Combativeness: 5  
 Empathy: 3  
 Creativity: 2  
 Reason: 3  
 Conviction: 2

### Advantages

Mentor Ally  
Financial Ease 4  
Keen Hearing

### Disadvantages

### Health Condition

Good		0 0 0 0 0
Okay	-1	0 0 0 0 0
Bad	-2	0 0 0 0
Critical	-3	0 0 0 0
Agony	0	



Stamina: 10  
 Survival: 3

## Domains & Disciplines

### Craft

0 0 0 0 0 + (CREA: 2)  
 Bonus:    Malus:  
 Disc:  
 Disc:  
 Disc:

### Close Combat

● ● ● 0 0 + (COMB: 5)  
 Bonus:    Malus:  
 Disc:  
 Disc:  
 Disc:

### Stealth

● ● 0 0 0 + (EMP: 3)  
 Bonus:    Malus:  
 Disc:  
 Disc:  
 Disc:

### Erudition

● 0 0 0 0 + (REA: 3)  
 Bonus:    Malus:  
 Disc:  
 Disc:  
 Disc:

### Magience

0 0 0 0 0 + (REA: 3)  
 Bonus:    Malus:  
 Disc:  
 Disc:  
 Disc:

### Natural env.

● ● ● 0 0 + (EMP: 3)  
 Bonus:    Malus:  
 Disc:  
 Disc:  
 Disc:

### Demorthen Mys.

0 0 0 0 0 + (EMP: 3)  
 Bonus:    Malus:  
 Disc:  
 Disc:  
 Disc:

### Occultism

0 0 0 0 0 + (REA: 3)  
 Bonus:    Malus:  
 Disc:  
 Disc:  
 Disc:

### Perception

● 0 0 0 0 + (REA: 3)  
 Bonus: +1 Malus:  
 Disc:  
 Disc:  
 Disc:

### Prayer

0 0 0 0 0 + (CONV: 2)  
 Bonus:    Malus:  
 Disc:  
 Disc:  
 Disc:

### Feats

● ● 0 0 0 + (COMB: 5)  
 Bonus:    Malus:  
 Disc:  
 Disc:  
 Disc:

### Relation

● 0 0 0 0 + (EMP: 3)  
 Bonus:    Malus:  
 Disc:  
 Disc:  
 Disc:

### Performance

0 0 0 0 0 + (CREA: 2)  
 Bonus:    Malus:  
 Disc:  
 Disc:  
 Disc:

### Science

0 0 0 0 0 + (REA: 3)  
 Bonus:    Malus:  
 Disc:  
 Disc:  
 Disc:

### Shooting & throw.

● ● ● ● ● + (COMB: 5)  
 Bonus:    Malus:  
 Disc:  
 Disc:  
 Disc:

### Travel

● 0 0 0 0 + (EMP: 3)  
 Bonus:    Malus:  
 Disc:  
 Disc:  
 Disc:



# Weapons

Dagger, knife, dirk      dmg: 1  
 Bow                              dmg: 2  
 \_\_\_\_\_                      dmg:  
 \_\_\_\_\_                      dmg:  
 \_\_\_\_\_                      dmg:

Potential: 2

# Combat attitudes

Cà/Tir

- ⊕ Standard  
Atk: 8/10 Def: 11 Spd: 8
- ⊕ Offensive  
Atk: 10/12 Def: 9 Spd: 8
- ⊕ Defensive  
Atk: 6/8 Def: 13 Spd: 8
- ⊕ Quick  
Atk: 8/10 Def: 9 Spd: 10
- ⊕ Movement  
Atk: 0/0 Def: 13 Spd: 8

# Defense :

00000 00000

# Speed:

00000

# Armor:

Leather tunic (1)



# ⊕ Equipment

\_\_\_\_\_  
 \_\_\_\_\_  
 \_\_\_\_\_  
 \_\_\_\_\_  
 \_\_\_\_\_  
 \_\_\_\_\_  
 \_\_\_\_\_  
 \_\_\_\_\_

# ⊕ Treasure

0      ⊕ Ember

0      ⊕ Azure

50      ⊕ Frost

# Valuables

\_\_\_\_\_  
 \_\_\_\_\_  
 \_\_\_\_\_

# ⊕ Artifacts

\_\_\_\_\_  
 \_\_\_\_\_  
 \_\_\_\_\_

# ⊕ Combat arts

\_\_\_\_\_  
 \_\_\_\_\_  
 \_\_\_\_\_

# ⊕ Resources

00000 00000 00000  
 00000 00000 00000  
 00000 00000 00000

# Rindath



Score: 10 / 10

# Ogham:



# Exaltation



Score: 6 / 6

# ⊕ Major miracles:

\_\_\_\_\_  
 \_\_\_\_\_  
 \_\_\_\_\_

# ⊕ Minor miracles:

\_\_\_\_\_  
 \_\_\_\_\_  
 \_\_\_\_\_

# Flux



## Mineral Flux

00000 00000 00000

## Vegetal Flux

00000 00000 00000

## Organic Flux

00000 00000 00000

## Fossil Flux

00000 00000 00000



# History

Birthplace: Reizh - Region of the Alliance Bridge - Rural

Social class: Nobility

Setbacks:

x

# Mental health

Mental Resistance: 7

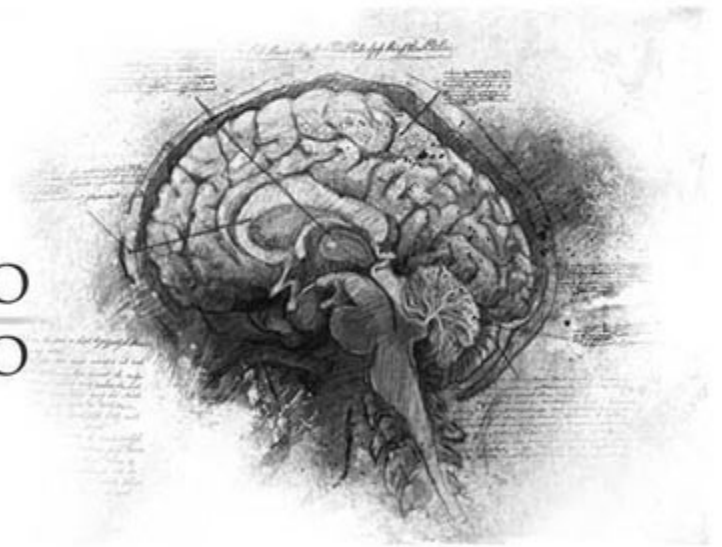
	Balance	Symptom	Syndrom	Madness
TRAUMA :	●●○○○	○○○○○	○○○○○	○○○○○
Hardening:	○○○○○	○○○○○	○○○○○	○○○○○

Disorder: **Obsession**

Str./Weak:

Scarring :

Special Ability:



# Personnality

Conscience : 5

Instinct : 7

Orientation : *Instinctive*

Character traits : **Quality : Combative**

**Flaw : Doubt**

# Faults

**Passion : 5**

**Subversion : 2**

**Influence : 3**

**Doubt : 3**

**Guilt : 2**

# Experience Points

Reste : 0

Total : 100

Highlights : x

