

# Ombres d'Esteren

## CHARACTER SHEET

Name: Lirand Player: Remy  
 Sex: H Age: 23 Ethnicity: Tri-Kazel Profession: Hunter  
 Description: \_\_\_\_\_

### Ways

Combativeness: 5  
 Empathy: 5  
 Creativity: 3  
 Reason: 1  
 Conviction: 1

### Advantages

Financial Ease 3  
 Quick

### Disadvantages

Phobia

### Health Condition

Good	00000
Okay	-1 00000
Bad	-2 00000
Critical	-3 00000
Agony	0



Stamina: 10  
 Survival: 3

## Domains & Disciplines

### Craft

OOOOO+(CREA:3)  
 Bonus: Malus:  
 Disc:  
 Disc:  
 Disc:

### Close Combat

●OOOO+(COMB:5)  
 Bonus: Malus:  
 Disc:  
 Disc:  
 Disc:

### Stealth

●●OOO+(EMP:5)  
 Bonus: Malus:  
 Disc:  
 Disc:  
 Disc:

### Erudition

OOOOO+(REA:1)  
 Bonus: Malus:  
 Disc:  
 Disc:  
 Disc:

### Magience

OOOOO+(REA:1)  
 Bonus: Malus:  
 Disc:  
 Disc:  
 Disc:

### Natural env.

●●●●●+(EMP:5)  
 Bonus: Malus:  
 Disc: Orientation 6  
 Disc:  
 Disc:

### Demorthen Mys.

OOOOO+(EMP:5)  
 Bonus: Malus:  
 Disc:  
 Disc:  
 Disc:

### Occultism

OOOOO+(REA:1)  
 Bonus: Malus:  
 Disc:  
 Disc:  
 Disc:

### Perception

●●●●O+(REA:1)  
 Bonus: Malus:  
 Disc:  
 Disc:  
 Disc:

### Prayer

OOOOO+(CONV:1)  
 Bonus: Malus:  
 Disc:  
 Disc:  
 Disc:

### Feats

OOOOO+(COMB:5)  
 Bonus: Malus:  
 Disc:  
 Disc:  
 Disc:

### Relation

●●OOO+(EMP:5)  
 Bonus: Malus:  
 Disc:  
 Disc:  
 Disc:

### Performance

OOOOO+(CREA:3)  
 Bonus: Malus:  
 Disc:  
 Disc:  
 Disc:

### Science

OOOOO+(REA:1)  
 Bonus: Malus:  
 Disc:  
 Disc:  
 Disc:

### Shooting & throw.

●●●●●+(COMB:5)  
 Bonus: Malus:  
 Disc:  
 Disc:  
 Disc:

### Travel

●●●●●+(EMP:5)  
 Bonus: Malus:  
 Disc:  
 Disc:  
 Disc:



# Weapons

Bow \_\_\_\_\_ dmg: 2  
 \_\_\_\_\_ dmg:  
 \_\_\_\_\_ dmg:  
 \_\_\_\_\_ dmg:  
 \_\_\_\_\_ dmg:

Potential: 2

# Combat attitudes

Cà/Tir

- ⊕ Standard  
Atk: 6/10 Def: 11 Spd: 11
- ⊕ Offensive  
Atk: 8/12 Def: 9 Spd: 11
- ⊕ Defensive  
Atk: 4/8 Def: 13 Spd: 11
- ⊕ Quick  
Atk: 6/10 Def: 9 Spd: 13
- ⊕ Movement  
Atk: 0/0 Def: 13 Spd: 11

# Defense :

00000 00000

# Speed:

00000

# Armor:

Studded leather tunic (2)



# ⊕ Equipment

Rations

\_\_\_\_\_

\_\_\_\_\_

\_\_\_\_\_

\_\_\_\_\_

\_\_\_\_\_

\_\_\_\_\_

\_\_\_\_\_

\_\_\_\_\_

# ⊕ Treasure

0  Ember

0  Azure

10  Frost

# Valuables

# ⊕ Artifacts

\_\_\_\_\_

\_\_\_\_\_

\_\_\_\_\_

# ⊕ Combat arts

\_\_\_\_\_

\_\_\_\_\_

\_\_\_\_\_

# ⊕ Resources

00000 00000 00000

00000 00000 00000

00000 00000 00000

# Rindath



Score: 13 / 13

# Ogham:

 \_\_\_\_\_

 \_\_\_\_\_

 \_\_\_\_\_

 \_\_\_\_\_

 \_\_\_\_\_

 \_\_\_\_\_

# Exaltation



Score: 3 / 3

# ⊕ Major miracles:

\_\_\_\_\_

\_\_\_\_\_

# ⊕ Minor miracles:

\_\_\_\_\_

\_\_\_\_\_

\_\_\_\_\_

# Flux



Mineral Flux

00000 00000 00000

Vegetal Flux

00000 00000 00000

Organic Flux

00000 00000 00000

Fossil Flux

00000 00000 00000





# History

Birthplace: Taol-Kaer - Dukedom of Sedl - Rural

Social class: Peasant

Setbacks: Solitude

---



---



---



---



---



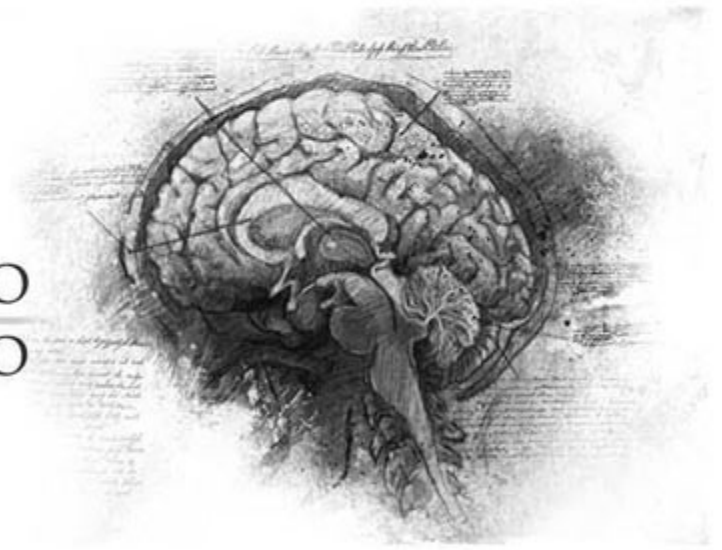
---

# Mental health

Mental Resistance: 6

	Balance	Symptom	Syndrom	Madness
TRAUMA :	●●●●●	●●○○○	○○○○○	○○○○○
Hardening:	○○○○○	○○○○○	○○○○○	○○○○○

Disorder: **Confusion mentale**    Str./Weak:  
 Scarring :                                    Special Ability:



# Personnality

Conscience : 2    Instinct : 8    Orientation : *Instinctive*

Character traits : *Quality : Extrovert*  
*Flaw : Immoral*

---



---



---



---



---

# Faults

Passion : 5  
 Subversion : 3  
 Influence : 5  
 Doubt : 1  
 Guilt : 1

# Experience Points

Reste : 15    Total : 100

Highlights : \_\_\_\_\_

---



---



---



---

